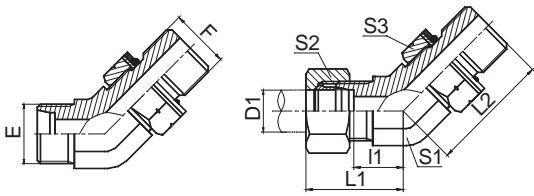


DIN卡套式管接头



45° 弯英管螺纹可调向O形圈密封柱端
 45° ELBOW BSP THREAD ADJUSTABLE
 STUD ENDS WITH O-RING SEALING

KF1CG4-OG
KF1DG4-OG

KF1CG4-OG/RN
KF1DG4-OG/RN

代号 PART NO.	螺纹 THREAD		管子外径 TUBE O.D.	尺寸 DIMENSIONS						压力等级 MPa
	E	F		D1	l1	L1	L2	S1	S2	
KF1CG4-12-02OG	M12X1.5	G1/8"X28	6	10	25	24	11	14	14	31.5 轻系列 L
KF1CG4-14-04OG	M14X1.5	G1/4"X19	8	11	26	27	14	17	19	
KF1CG4-16-04OG	M16X1.5	G1/4"X19	10	12.3	27.3	27	16	19	19	
KF1CG4-16-06OG	M16X1.5	G3/8"X19	10	12.3	27.3	30	16	19	22	
KF1CG4-18-06OG	M18X1.5	G3/8"X19	12	13	28	31	19	22	22	
KF1CG4-22-08OG	M22X1.5	G1/2"X14	15	15	30	36	22	27	27	
KF1CG4-26-08OG	M26X1.5	G1/2"X14	18	16.5	33	37.5	27	32	27	
KF1CG4-26-12OG	M26X1.5	G3/4"X14	18	16.5	33	42	27	32	32	
KF1CG4-30-12OG	M30X2	G3/4"X14	22	19.7	36.2	42.5	30	36	32	16 轻系列 L
KF1CG4-36-16OG	M36X2	G1"X11	28	21.5	38	44.5	36	41	41	
KF1CG4-45-20OG	M45X2	G1.1/4"X11	35	25.5	47	50.5	48	50	50	
KF1DG4-14-04OG	M14X1.5	G1/4"X19	6	13	28	27	14	17	19	63 重系列 S
KF1DG4-16-04OG	M16X1.5	G1/4"X19	8	13.3	28.3	27	16	19	19	
KF1DG4-18-06OG	M18X1.5	G3/8"X19	10	13.5	30	31	19	22	22	
KF1DG4-20-06OG	M20X1.5	G3/8"X19	12	13.5	30	31	19	24	22	
KF1DG4-22-08OG	M22X1.5	G1/2"X14	14	16.3	34.3	36	22	27	27	
KF1DG4-24-08OG	M24X1.5	G1/2"X14	16	16.2	34.7	36.5	24	30	27	40 重系列 S
KF1DG4-30-12OG	M30X2	G3/4"X14	20	18.7	40.2	42.5	30	36	32	
KF1DG4-36-16OG	M36X2	G1"X11	25	21	45	44.5	36	46	41	
KF1DG4-42-20OG	M42X2	G1.1/4"X11	30	24.3	50.8	47.5	41	50	50	

注：如需带卡套及卡套螺母整套订货，则请在代号后加“RN”，如1CG4-30-12OG/RN。
 Note: In case if you are interested to order the adapter in complete set with cutting ring and nut ,it is necessary to insert suffix "RN" after our part no., for example 1CG4-30-12OG/RN.