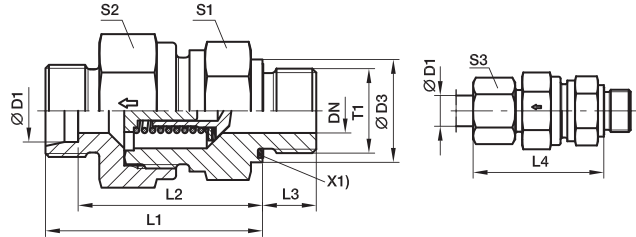


单向阀

KFRHV-M-ED 单向阀 公制接头-ED密封

EO 24°锥/公制阳螺纹-ED密封(ISO997)



X1) ED密封圈

系列	D1	T1	CF DN	71 DN	D3	CF L1	71 L1	L2	L3	L4	S1	CF S2	71 S2	S3	重量克/件	订货号	工作压力(bar)	
																	CF	71
L	06	M 10x1	3.5	3.5	14	35.0	-	28.0	8	42.5	17	17	17	14	46	KFRHV06LMEDOMD	400	250
	08	M 12x1.5	5.5	5.5	17	36.0	-	29.0	12	43.5	19	19	19	17	58	KFRHV08LMEDOMD	400	250
	10	M 14x1.5	7.5	7.5	19	45.5	-	38.5	12	53.0	22	24	34	19	108	KFRHV10LMEDOMD	400	250
	12	M 16x1.5	9.5	9.5	22	49.5	-	42.5	12	57.0	27	30	30	22	173	KFRHV12LMEDOMD	400	250
	15	M 18x1.5	11.0	11.5	24	52.5	-	45.5	12	60.5	27	32	32	27	192	KFRHV15LMEDOMD	400	250
	18	M 22x1.5	14.0	14.0	27	56.0	-	50.0	14	66.0	36	41	36	32	298	KFRHV18LMEDOMD	400	160
	22	M 26x1.5	18.0	18.0	32	64.0	-	55.0	16	71.0	41	46	46	36	446	KFRHV22LMEDOMD	250	160
	28	M 33x2	23.0	23.0	40	72.0	-	63.0	18	79.5	50	55	55	41	722	KFRHV28LMEDOMD	250	100
	35	M 42x2	29.0	29.0	50	81.0	-	69.0	20	90.5	60	65	60	50	1053	KFRHV35LMEDOMD	250	100
	42	M 48x2	29.0	29.0	55	82.0	-	68.5	22	91.0	65	70	70	60	1563	KFRHV42LMEDOMD	250	100
S	06	M 12x1.5	3.5	3.5	17	38.5	-	31.5	12	46.0	19	19	19	17	70	KFRHV06SMEDOMD	420	400
	08	M 14x1.5	3.5	3.5	19	38.5	-	31.5	12	46.0	19	19	19	19	76	KFRHV08SMEDOMD	420	400
	10	M 16x1.5	5.5	5.5	22	45.5	-	38.0	12	54.0	22	24	24	22	124	KFRHV10SMEDOMD	420	400
	12	M 18x1.5	7.5	7.5	24	48.5	-	41.0	12	57.0	24	27	27	24	157	KFRHV12SMEDOMD	420	400
	14	M 20x1.5	9.5	9.5	26	52.5	-	44.5	14	62.0	27	32	32	27	215	KFRHV14SMEDOMD	420	315
	16	M 22x1.5	11.0	11.5	27	55.0	-	48.0	14	66.0	32	36	36	30	296	KFRHV16SMEDOMD	420	315
	20	M 27x2	15.0	15.0	32	61.0	-	52.0	16	73.5	41	50	46	36	521	KFRHV20SMEDOMD	420	250
	25	M 33x2	19.0	19.0	40	67.0	-	54.5	18	78.5	46	55	50	46	648	KFRHV25SMEDOMD	420	250
	30	M 42x2	24.0	24.0	50	78.0	-	64.0	20	90.5	60	60	60	50	1178	KFRHV30SMEDOMD	250	250
	38	M 48x2	29.0	29.0	55	88.0	-	69.5	22	100.0	65	70	70	60	1627	KFRHV38SMEDOMD	250	250