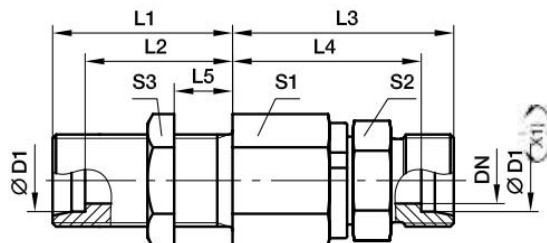


旋转接头

KFDG 107-M 直通隔板式滚珠轴承旋转接头

DG 隔板式滚珠轴承旋转接头

EO24°锥 / EO24°锥



X1) 轴

系列	D1	DN	T1	L1	L2	L3	L4	L5	S1	S2	S3	重量 g/件	订货号
107	06	5.0	M14×1.5	23	16.0	49	42.0	5	22	17	19	134	KFDG107/06SOMD
	08	5.0	M16×1.5	23	16.0	49	42.0	5	22	17	22	143	KFDG107/08SOMD
	12	9.5	M 20×1.5	23	15.5	60	52.5	5	30	24	27	291	KFDG107/12SOMD
	16	9.5	M 24×1.5	26	17.5	60	51.5	5	30	27	32	328	KFDG107/16SOMD
	20	16.0	M 30×2.0	39	28.5	76	65.5	15	41	36	41	710	KFDG107/20SOMD
	25	16.0	M 36×2.0	42	30.0	78	66.0	15	41	41	46	847	KFDG107/25SOMD
	30	26.0	M 42×2.0	44	30.5	89	75.5	15	60	46	50	1533	KFDG107/30SOMD
	38	26.0	M52×2.0	47	31.0	92	76.0	15	60	55	65	1930	KFDG107/38SOMD